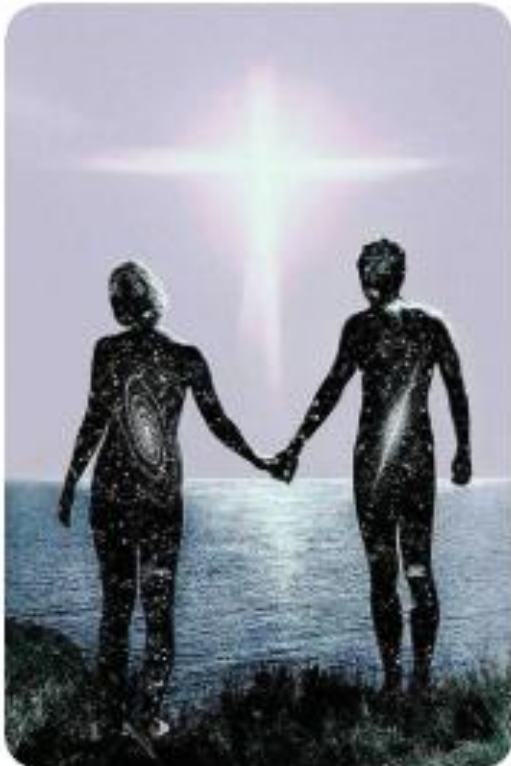


**South Auckland Spiritualist Church SCNZ™**  
**SPIRITUAL CONNECTION & HEALING**  
 All Welcome  
 Sunday Service 5:30pm  
**WWW.SPIRITUALGROWTH4U.COM**

info@spiritualgrowth4U.com

47 East Tamaki Road (down Simons Lane), Papatoetoe, Auckland 2025

**Newsletter August 2020**

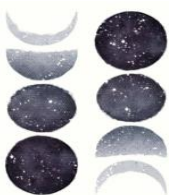


When our souls are newly formed in the divine, each crafts a book. The most beautiful book you can imagine, each bound and decorated as uniquely as the soul it represents. And in this book is the pathway toward enlightenment for our souls over lifetimes. I'm shown this book as a journey, with each chapter representing a lifetime, and each lifetime full of the lessons and energies needed for our growth. The book itself is a living document, that can be edited and adapted as we progress. For particularly tough lessons, we may find ourselves repeating the same decisions, the same experiences repeatedly in one chapter, or over several if the lesson is powerful. On and on until we are able to move on to the next. Some chapters may be short. This may be the case where our lesson comes not from what we experience but from the lesson our presence gives others. This may be the case where we may have agreed to play the villain in another souls journey, or our time on the earth plane was short. So our lesson was in the service of others. And what greater expression of love is there but to dim your light so another's may grow?

**Calendar for August 2020 Sunday service  
5.30pm to 7pm**

Aug 2 <sup>nd</sup>	TBA
Aug 9 <sup>th</sup>	Matthew Tod
Aug 16 <sup>th</sup>	Sue Lyon
Aug 23 <sup>rd</sup>	Ann Rynbeck
Aug 30 <sup>th</sup>	Paul Edgehill

Phases of the Moon during August



First Quarter – Wed 26<sup>th</sup>, 5.59 am

**Full Moon – Tue 4<sup>th</sup>, 3.59 am**

Last Quarter – Wed 12<sup>th</sup>, 4.47 am

New Moon – Wed 19<sup>th</sup>, 2.42 pm

So our journeys are mapped, and our teams of kaitiaki and loved ones of the divine in the spirit realms are poised to work with us along this journey. Putting

the right opportunities in front of us, lifting us through hardships and leading us to joy. Moving people and experiences into and out of our paths so we might feel every richness of this lifetime. All in-order for us to learn and grow into our best selves as mapped out by us.

The universe/the divine/spirit/god whomever your heart pulls you to, actively works to lift the human condition, so all here on this realm can evolve. It is not often, in our collective journeys in the earth plane, that we are thrust into the midst of a shared human experience. One so powerful and shared by so many it is as if the hard-reset button has been pressed, and changes are made across millions of soul journeys. What love they have for us, to disrupt so many, simultaneously. How important must the lessons be for spirit to put this in our paths. My human voice finds this part difficult to express. Because it is hard to sit in the joy, hope, and peace of this experience in the face of the suffering of so many without acknowledging the *mamae* /hurt of those who suffered and may continue to suffer for many moons past today. But the energies have shifted and continue to shift. It is visible in the people and it is visible in the planet. The *rahui* has been much like a hibernation. A period of closed, low energies, designed to give people the space to look within and find those gifts that have always been there, waiting for them. Once those gifts are received how can we not use them? That so many have used this time to reflect is evident in the changes desired, and the values now being expressed. What people think is important is changing. It is fortuitous that *matariki* is now upon as it brings the light of rebirth in a new year

energized and renewed. New beginnings, new lessons, new pathways, new journeys towards our greater purpose. How blessed is this gift.

And while we hibernated, we walked more gently across the earth and our hibernation became her rebirth. We should marvel at how quickly she returned once we were kinder. And hope that our steps remain gentle going forward. So she may continue to heal, and in healing herself we heal too.

If we ascribe to the knowledge of the divine in what-ever form they take, and we recognise the higher purpose of our soul and its pathway. Then it is easy to sit in awe of how significant these last few months have been in our hearts, in our homes, in our country, and across the globe. Because healing from trauma, leads to the greatest growth, and our stories, we wrote at soul birth - have lead us to this point. The challenge from spirit is laid down. Now that the energies of change are upon us, how shall we use them?

In love and light, thank you.

*Inspirational writing – Rochelle Newport*





## SASC Reading Day – Saturday

8<sup>th</sup> August

10.30 am – 3pm

## Classes for August

### Spiritual Healing Class

Mon 3<sup>rd</sup>, 17<sup>th</sup>, 31<sup>st</sup>

For all enquiries contact  
Matthew Tod Ph: 021 173 6344

### Soul Connection Class

Tues 4<sup>th</sup>, 11<sup>th</sup>, 18<sup>th</sup>, 25<sup>th</sup>

For all enquiries contact  
Susan Kirker Ph: 021 285 3396  
Email: [jsk.partners@xtra.co.nz](mailto:jsk.partners@xtra.co.nz)

### Awareness Class

Sun 23<sup>rd</sup>

For all enquiries contact  
Linda Gardiner email: [admin@totalutilities.co.nz](mailto:admin@totalutilities.co.nz)

### Open Development Circle

Mon 10<sup>th</sup>, 24<sup>th</sup>

For all enquiries contact:  
Matthew Tod Ph: 021 173 6344

### Meditation Class

Wed 19<sup>th</sup>

For all enquiries contact:  
Anne Pope email: [annepope8@hotmail.com](mailto:annepope8@hotmail.com)

All details regarding classes are available on  
**our website;**

<https://www.spiritualgrowth4u.com/>

we well as in the Perspex holders along the  
righthand wall just before you enter the main  
hall. Please feel free to take a copy.

#### **PARKING NOTICE FOR ALL CLASSES, SERVICES, EVENTS**

You may park in the parking spaces alongside the front section of the church. Please do not park in any of the parking spaces across from the front entrance of the church as your cars may be towed away. Additional free parking is available in the parking lot at the rear of the centre on Charles St.

## Working with Spirit.

I have been interested in how myself and others naturally connect with spirit for many years now.

What I have discovered time after time is how differently we all connect.

Yes we are connecting to the same divine source of energy but we are also connecting to different levels of vibration within source energy.

I have found that we all connect in different ways at different times depending on what spirit wishes to bring through.

Yes some parts remain the same, opening up to be a pure, clear channel to receive from the highest, purest frequency, after that it can be different for each of us.

What spirit chooses to bring through is governed by whom they choose to connect with and how by what is of most need at that given time.

From what I've seen, how they can best reach to heal those in need.

As we are all unique sparks of the divine, what we need to fully grasp what is being given may also be as unique as we are.

If we look long enough we will always find what doesn't resonate with us but is that not how we find out what does fit with us.

I feel it's important to be exposed to many forms of spirit connection and how spirit works through others in a myriad of ways as it better helps us to define our own strengths giving us greater confidence and appreciation of who we are and how we too can and do work with spirit.

If you think about it everything in physical form is only possible with each one of us tapping into spirit and bringing it into form

starting with a connection with spirit in our own unique way.

Thank You Spirit for allowing us the freedom to come and grow and expand within the physical.

Thank You for allowing us to connect on so many levels to the infinite knowledge of the spirit world, bringing into form new energies.

Thank You for channelling through us in the best way that blends with our unique expression of divine source energy.

*Inspirational writing - Lee-Ann Storm.*

#### **INTERESTED IN BECOMING A MEMBER?**

##### **Subscriptions for the current year.**

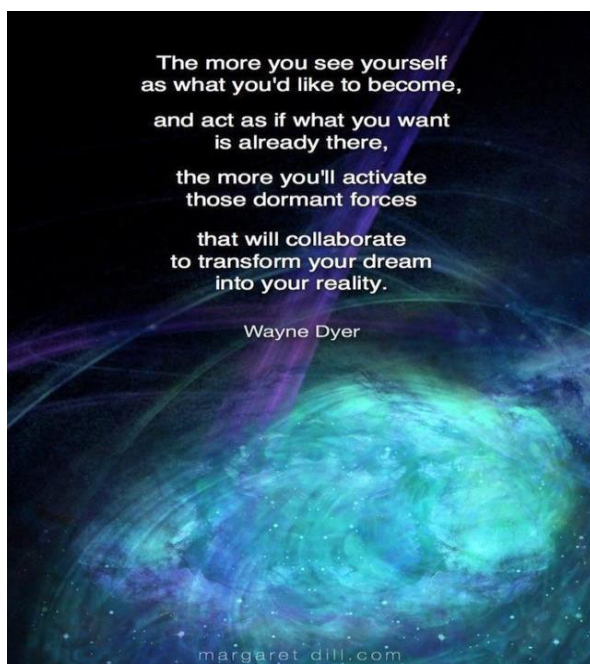
\$30 to join for the year 1<sup>st</sup> July 2020 – 30 June 2021. **Receive discount at classes and reading days and access to our library.**

Please enquire at Church.

Members are welcome to borrow from an extensive range of books from our library, for just a gold coin donation.

Our trade table at the back of the church next to the library is also a gold coin donation.

All funds raised go towards the running and upkeep of our church.



#### **Committee Jul 2020- Jun 2021**

President:	Karena Dixon
Vice President:	Lee-Ann Storm
Secretary:	Linda Gardiner
Treasurer:	Anne Pope
Committee:	Barry Hall Shelley Hornell Vicki Clarkson Rochelle Newport-Lupena John Bolstad Denise Marsden

**Ministers:** Susan Kirker  
Matthew Tod

Our point of contact for Reading days and Mediums on platform is Shelley Hornell. Shelley can be contacted at [shelleyatchurch@gmail.com](mailto:shelleyatchurch@gmail.com)



#### **Thought for the month**

The key is to have our eyes wide open to our own faults and partially closed to the faults of others – not the other way around.

Neal A. Maxwell



If anyone has any potential contributions for the newsletter e.g. events, guided writing, items of interest, book recommendations, etc.

please email me at [annepope8@hotmail.com](mailto:annepope8@hotmail.com)



**Love and Light to All**





Presents

## **SPIRITUAL MEDIUMS READING DAY**

**Saturday 8<sup>th</sup> August 2020 - 10.30am-3pm**

- **Spiritual Mediumship Reading** - find peace, healing and upliftment as the medium bridges a connection with you and a loved one from spirit.
- **Mediums for the day** – we will have 6-8 mediums **\*\* to be advised \*\*** including Susan Kirker, Matthew Tod, and Janis Balmforth.
- **Spirit Artistry with Davene**
- **Spiritual Healing** - a modality of energy healing is freely available on request. Experience the joy and upliftment as your energy systems return to a state of balance.

**Pre booking is not required, however this will give you some choice of time. You can turn up on the day and put your name down for a reading, first come first served basis.**

**Door tickets are cash sales only.** (If you would like consecutive sessions we recommend you book.

**Internet banking account: 06 0197 0037869 – 00**

**Reference 'your name' and option 1, 2, or 3)**

**Ticket options** (all sessions are 20 minutes)

Option one (Any one session) – members \$20, non-members \$30

Option two (Any two sessions) – members \$30, non-members \$40

Option three (Any three sessions) – members \$50, non-members \$60

**Membership forms are available on our website [www.spiritualgrowth4u.com](http://www.spiritualgrowth4u.com)**

**Payment: All bookings must be pre-paid and email your choice to [events@spiritualgrowth4u.com](mailto:events@spiritualgrowth4u.com).**

Free parking is available in the parking lot in the rear of the centre on Charles St. Light refreshments will be available.